

# Camden County

## Highlights from the 2023 NCACC Map Book



### Demographics

2023 population	11,144
New residents since 2013	1,203
Percentage increase since 2013	12%

2023 Population Facts	County	NC	Rank <sup>1</sup>
Median Age	42.5	39.8	49
Population Under 18	18%	21%	69
Population Age 65+	19%	18%	78
Veterans	10%	6%	9



### Health & Wellbeing

**16%**

of residents  
are covered  
by Medicaid.

**14%**

of residents under  
65 are uninsured.

**9%**

of households  
are food  
insecure.

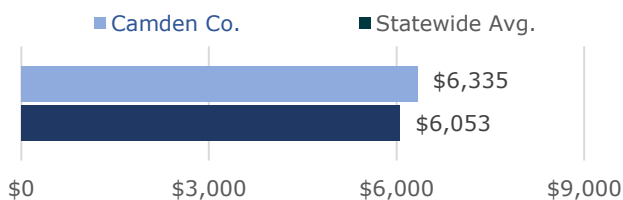
**0**

deaths from  
overdose were reported  
in 2021.

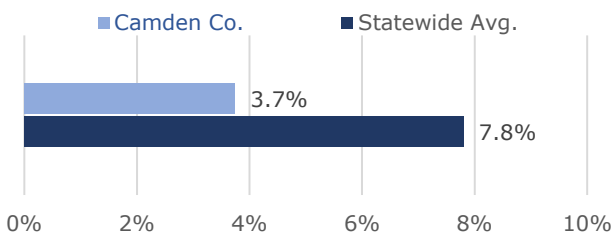


### Education

#### Average Teacher Salary Supplement, 2022-23



#### Share of Students in Charter Schools, 2021-22



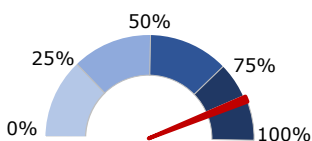
### Economy & Taxes

Income & Jobs	County	NC	Rank <sup>1</sup>
Average Weekly Wage	\$933	\$1,215	31
Per Capita Income	\$55,457	\$56,173	17
Children in Poverty	10%	18%	2
May 2023 Unemployment	3.2%	3.4%	29
Employed residents whose job is within the county	22%	72%	100

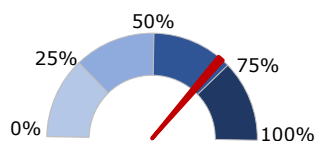
Local Taxes	County	NC	Rank <sup>1</sup>
Property Tax Rate, FY23-24	0.7300	0.6257	64
Taxable property per capita in \$1,000s, FY 22-23	\$115.1	\$136.3	51
Property tax levy per capita	\$1,001	\$854	17
Sales tax rate (state + local)	6.75%	—	—



### Broadband Access



Households with a  
desktop, laptop,  
or tablet computer.



Broadband Serviceable  
Locations fully served by  
broadband internet.



To support counties in addressing North Carolinians' broadband needs, the NCACC released the Connecting Counties playbook, an online resource developed by the Connecting Counties Task Force under the leadership of NCACC President Tracey Johnson.

To access the playbook, use this QR code or visit  
<https://www.ncacc.org/connecting-counties>.

(1) A rank of 1 indicates the "best" or preferred value for each measure (i.e., the highest income, the lowest unemployment rate). For full notes, explanations of each indicator, and sources, or to download the Map Book or this fact sheet, visit [www.ncacc.org/mapbook](http://www.ncacc.org/mapbook).