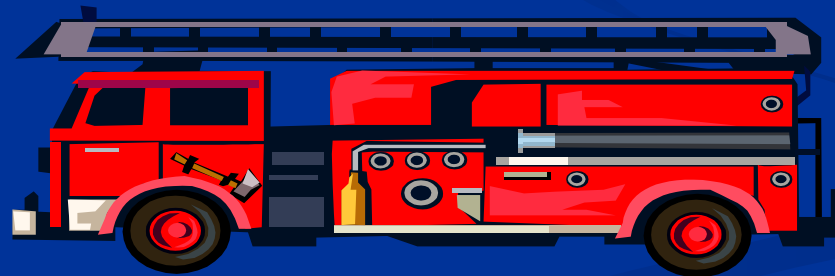




*Do the **RIGHT** Thing*  
for lights and sirens





**YIELDING TO  
EMERGENCY  
VEHICLES**



Presented by  
Pasquotank-Camden EMS  
335-1524

# Overview

- Area emergency vehicles
- Right-of-way for emergency vehicles
- Warning devices
- Responsibilities of the emergency vehicle operator
- Crash statistics

# Overview

- Emergency vehicle driver training
- Yielding to emergency vehicles
- Proper and improper yielding techniques
- Passing parked emergency vehicles
- Special considerations



# PASQUOTANK-CAMDEN EMS



# AREA AMBULANCES



**CHOWAN COUNTY EMS**



**CURRITUCK EMS**



**COROLLA RESCUE**



**DARE COUNTY EMS**



# FIRE DEPARTMENT VEHICLES



**ELIZABETH CITY**



**CAMDEN COUNTY**



**PASQUOTANK COUNTY**



**COAST GUARD**



# SHERIFF'S DEPARTMENTS



**PASQUOTANK COUNTY**



**CAMDEN COUNTY**



# ELIZABETH CITY POLICE DEPARTMENT VEHICLES



# NORTH CAROLINA STATE HIGHWAY PATROL



# NORTH CAROLINA MOTOR CARRIER ENFORCEMENT VEHICLE



# EMERGENCY MANAGEMENT



# Right-of-Way for Emergency Vehicles

- NCGS 20-156
  - Exceptions to the right-of-way rule
    - Police vehicles
    - Fire department vehicles
    - Public and private ambulance/rescue squad emergency service vehicles
    - Vehicles used by an organ procurement/transplant organization
    - County fire marshal vehicles
    - Civil preparedness coordinators



# Appropriate Warning Devices

- What emergency vehicles must provide
  - Appropriate warning lights
    - Emergency vehicles must provide proper lighting
  - Appropriate warning sound
    - Emergency vehicles must provide a bell, siren or exhaust whistle audible under normal conditions from a distance not less than 1,000 feet
  - Both **MUST BE USED** to properly and legally provide warning



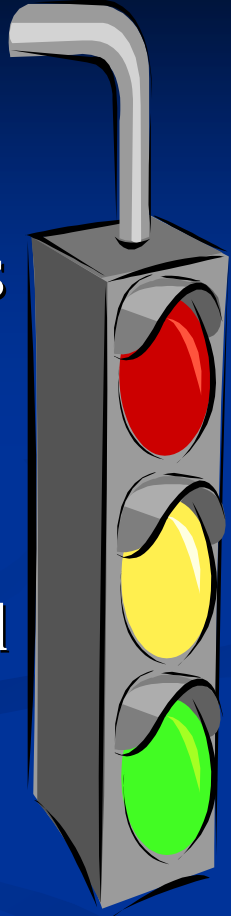
# Use of Lights Without Audible Warning

- Typically known as “courtesy lights”
- Must be approved by local law enforcement
- Often found in vehicles of medical first responders or fire fighters
- Often placed on the dashes of private vehicles
- Due to the fact that there is no audible warning device, motorists are *requested*, not required, to yield



# Rights and Responsibilities of the Emergency Vehicle Operator (NCGS 20-156)

- Proceeding through intersections controlled by lights or signs
  - Emergency vehicles may proceed if light AND sound warning devices are properly used
  - Emergency vehicle operators must drive with “Due regard for the safety of all persons using the highway”
  - Emergency vehicle operator is not relieved or protected from the consequence of any arbitrary exercise of such right-of-ways



# Speed and the Emergency Vehicle

- NCGS 20-145
  - Speed limitations shall not apply to emergency vehicles when traveling in the performance of their duties
  - The driver, however, is not protected from the consequence of a reckless disregard for the safety of others



# Ambulance Crash Statistics

- Approximately 6,500 ambulance crashes per year
  - Injure 10 people per day
  - Kill 2 people per month
- Attributed causes
  - Speeding
  - Fatigue
  - Driver error
    - *Source: DetroitNews.com*



# Results of Ambulance Crashes



# Results of Ambulance Crashes



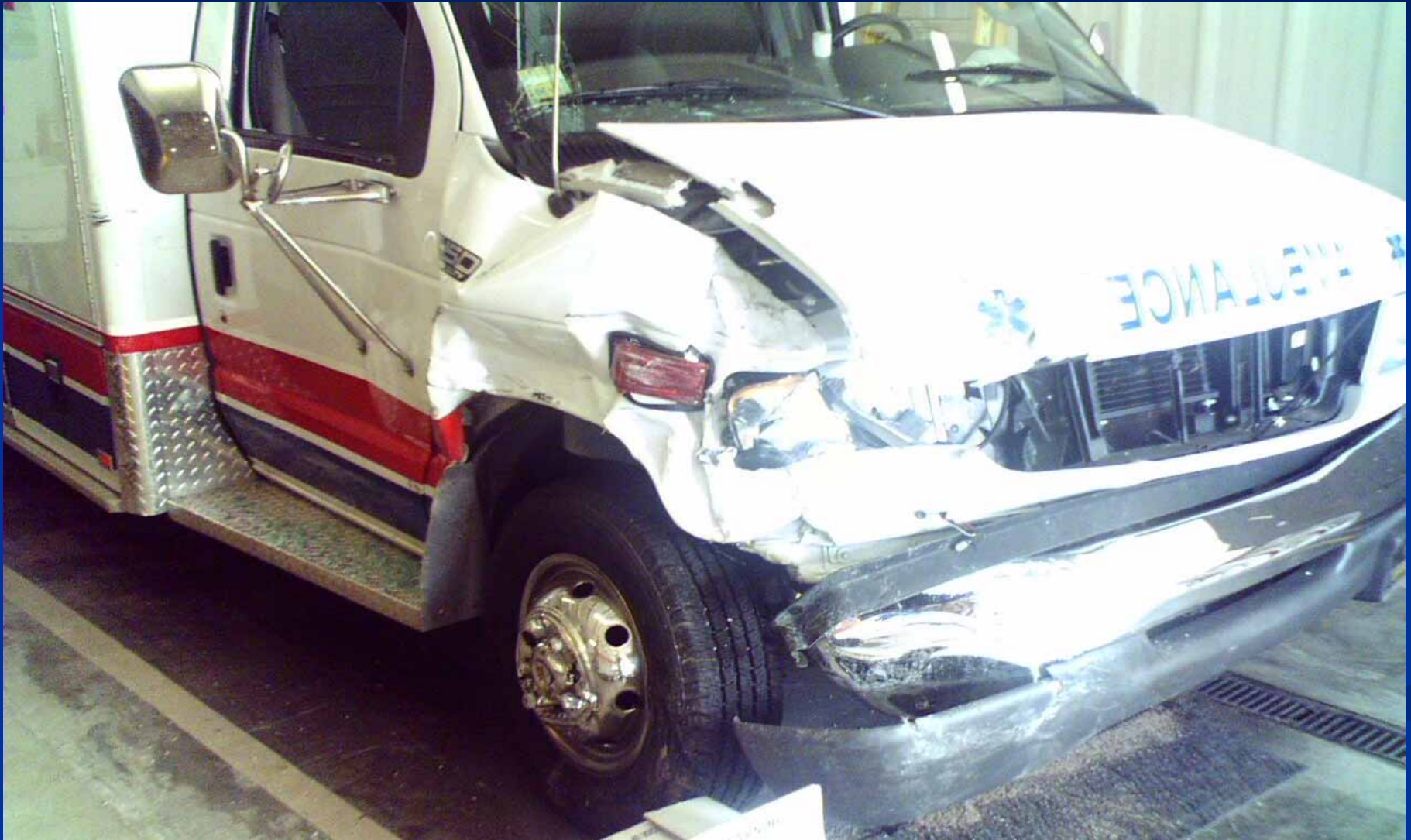
# Results of Ambulance Crashes

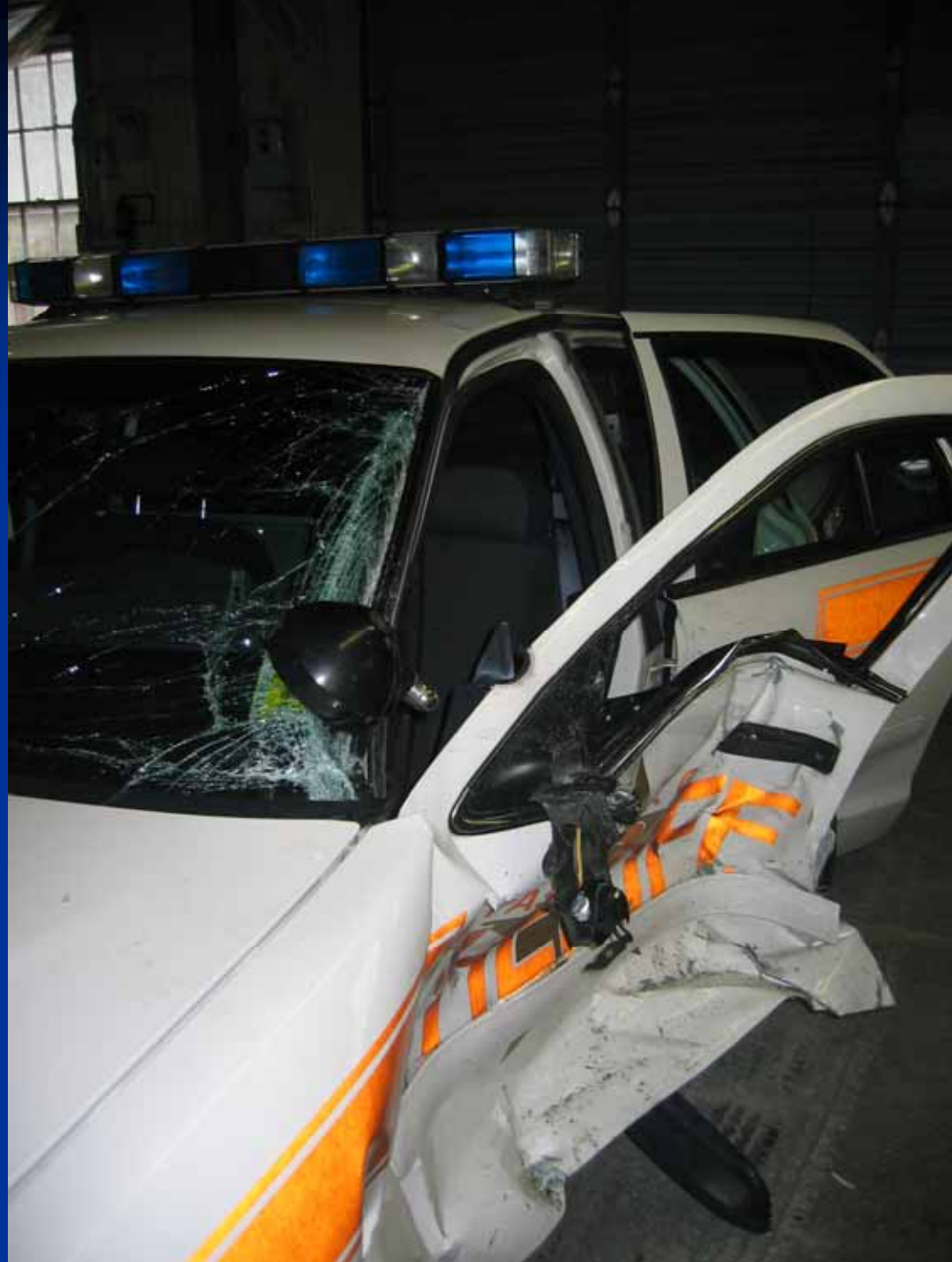


# Results of Ambulance Crashes



# Results of Ambulance Crashes





# Fire Department Crash







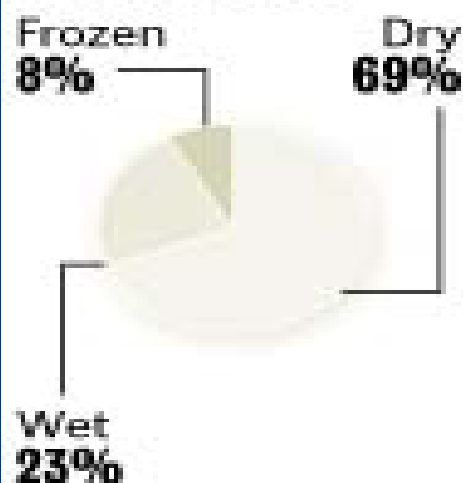
# Crash scenarios

The highest number of fatal ambulance crashes occur in the afternoons, on dry roads, clear weather, or at intersections while rushing to or from a scene.

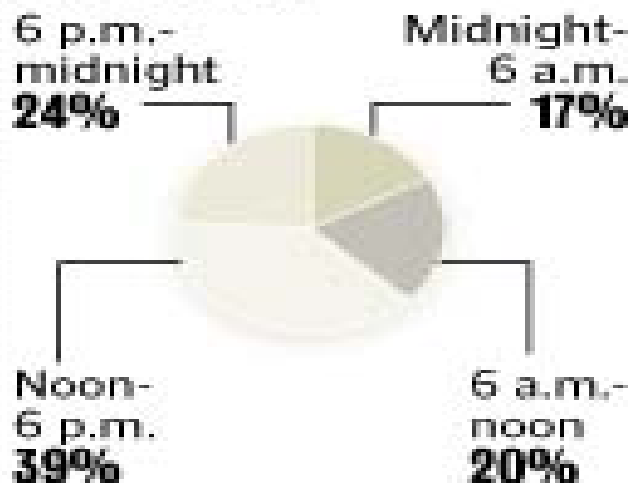
## Type of collision:



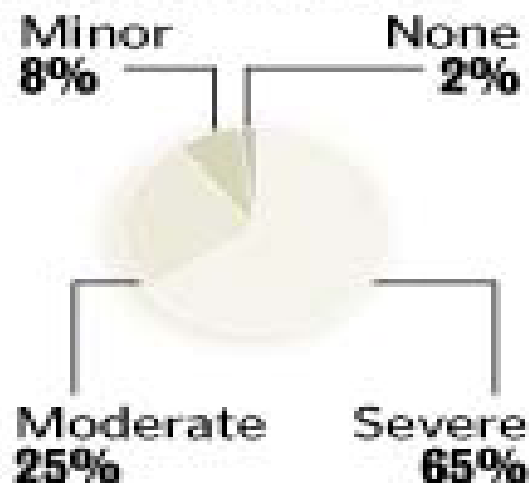
## Road surface:



## Time of day:



## Extent of damage:



Source: "Characteristics of Fatal Ambulance Crashes in the United States: An 11-Year Retrospective Analysis," *Prehospital Emergency Care*, July/September 2001.

*The Detroit News*



# Emergency Vehicle Driver Training

- Fire and EMS - CEVO
  - Coaching the Emergency Vehicle Operator
  - 9 hour class teaches standards for driving emergency vehicles
- Law Enforcement
  - Driver training standards taught in BLET (Basic Law Enforcement Training)
  - 40 hours of vehicle driver training
    - 12 classroom hours
    - 28 “in the field” hours



# Yielding to Emergency Vehicles

- NCGS 20-157
  - Requires the drivers of all other vehicles to perform the following maneuvers
    - Drive to a position as near as possible and parallel to the right-hand edge or curb, clear of any intersections of streets or highways
    - Stop and remain in such position until passing of the emergency vehicle is complete (unless directed by a police or traffic officer to do otherwise)
  - Applies to all vehicles, regardless of direction of travel, on a two lane road or highway



# Yielding to Emergency Vehicles

- Does not apply to vehicles traveling in the opposite direction of the emergency vehicle on a four lane highway with a median divider
- Violation of this law is a Class 2 misdemeanor
  - Minimum fine \$25.00 and costs of court



# Proper Yielding Techniques

- Driving as near as possible and parallel to the right hand edge or curb and stopping
- Remaining clear of intersections
- Remaining stopped until emergency vehicle has passed
- Moving into the right lane on a 4 lane highway if traffic allows
- Staying where you are at a stop sign or red light if you cannot safely pull to the right



# Proper Yielding Techniques

- Pulling to the left hand curb on a one way street if you are unable to pull to the right
- Using your turn signal to indicate intentions
- Being alert to more than one approaching emergency vehicle
- Keeping your radio volume so that it won't interfere with your ability to hear an approaching emergency vehicle



# Proper Yielding Techniques

- Checking your mirror often
- Making sure lanes are safe before re-entering
- Limiting cell phone usage while your vehicle is in motion



# Improper Yielding Techniques

- Stopping in the middle of the left hand lane on a four lane highway
- Pulling to the left in the center turn lane or into oncoming traffic
- Driving through a red light or stop sign
- Making a left turn quickly into a driveway or street
- Racing ahead to get through a green light or turn before the emergency vehicle reaches you



# Improper Yielding Techniques

- Disregarding and continuing to travel despite the emergency vehicle
- Slamming on your brakes/stopping directly in front of an emergency vehicle
- Following an emergency vehicle with your flashers on



# Improper Yielding Techniques

- Stopping in a curve or crest of a hill
  - Activate turn signal and proceed to safest location



Source: [www.holtgren.org](http://www.holtgren.org)



# Passing Parked Emergency Vehicles

- On four lane highways
  - Approach with caution
  - Move into the lane that is not the one closest to the parked emergency vehicle
  - Continue traveling in chosen lane until safely clear of the vehicle
  - Applies if you can safely change lanes without interfering with any other traffic
  - Watch for officials directing you to do otherwise



# Passing Parked Emergency Vehicles

- Two lane roads
  - Slow the vehicle
  - Maintain a safe speed for traffic conditions
  - Continue at a reduced speed until you have completely passed the emergency vehicle
  - Watch for officials directing you to do otherwise



# Passing Parked Emergency Vehicles

February 8, 2005 in Randolph County

- WINSTON-SALEM, N.C. (AP) -- State highway patrol troopers are charging an 18-year-old after a firefighter, an E-M-S worker and a nurse were hit while trying to help out a crash victim.

The accident happened early today on N.C. 22 just south of Coleridge in Randolph County.

A young girl had lost control of her vehicle and ran off the road.

E-M-S workers and firefighters from the Coleridge Volunteer Fire Department were on scene helping when another car ran off the road, striking four people helping the original accident.

The brakes on the vehicle had gone out.

He also hit a nurse who had stopped to help. She was transported to Duke University Medical Center and listed in critical condition. The firefighter and E-M-S worker suffered only minor injuries.

Anthony Martin of Bennett is being charged with failure to reduce speed and operating a vehicle with improper brakes.

# Parking Near Emergency Vehicles

It is unlawful to park and leave standing a vehicle within 100 feet of emergency apparatus engaged in rendering assistance to victims of an accident



# Special Considerations

- Fire apparatus
  - Unlawful to follow fire apparatus traveling in response to a fire alarm closer than one block
  - Unlawful to drive into or park a vehicle within one block where fire apparatus has stopped in answer to a fire alarm
  - Outside corporate city limits, it is unlawful to follow or park closer than 400 feet from fire apparatus responding to an alarm



# Special Considerations

- Unlawful to drive over a fire hose or any other equipment that is being used at a fire at any time
- Unlawful to block fire-fighting apparatus or any other equipment from its source of supply regardless of its distance from the fire





Source: [www.averdata.com](http://www.averdata.com)



# ?TEST QUESTION?

- If you're cruising down the highway in the passing lane and an emergency vehicle is closing in behind you-swirling its lights and blaring its siren-YOU SHOULD...



# ?TEST QUESTION?

- A. Continue in the passing lane and hit the gas so you can lead the emergency vehicle to the scene...after all, you do have a scanner in your car and you know where they're going



# ?TEST QUESTION?

- A. Continue in the passing lane and hit the gas so you can lead the ambulance to the scene...after all, you do have a scanner in your car and you know where they're going
- B. Turn up the radio and ignore all the commotion (they can pass you on the right like everyone else has been doing)



# ?TEST QUESTION?

- A. Continue in the passing lane and hit the gas so you can lead the ambulance to the scene...after all, you do have a scanner in your car and you know where they're going
- B. Turn up the radio and ignore all the commotion (they can pass you on the right like everyone else has been doing)
- C. Wonder why it is you are loitering-perhaps even illegally-in the passing lane for no reason



# ?TEST QUESTION?

- A. Continue in the passing lane and hit the gas so you can lead the emergency vehicle to the scene...after all, you do have a scanner in your car and you know where they're going
- B. Turn up the radio and ignore all the commotion (they can pass you on the right like everyone else has been doing)
- C. Wonder why it is you are loitering-perhaps even illegally-in the passing lane for no reason
- D. Slam on the brakes immediately and let the emergency vehicle go around you



# ?TEST QUESTION?

- A. Continue in the passing lane and hit the gas so you can lead the emergency vehicle to the scene...after all, you do have a scanner in your car and you know where they're going
- B. Turn up the radio and ignore all the commotion (they can pass you on the right like everyone else has been doing)
- C. Wonder why it is you are loitering-perhaps even illegally-in the passing lane for no reason
- D. Slam on the brakes immediately and let the emergency vehicle go around you
- E. Quickly-and safely-move into the right hand lane (and/or shoulder) leaving a clear path



# ANSWER

- E. Quickly and safely move to the right hand lane (and/or shoulder), leaving a clear path for the emergency vehicle



# Unconditional Right-of-Way



# Award Winning Program



## NORTH CAROLINA ASSOCIATION OF COUNTY COMMISSIONERS

### The Outstanding County Program Award

#### **2004 Winner - Public Education/Participation**

*The Outstanding County Program Awards was developed as a way to recognize innovative programs that other counties might want to emulate and to honor counties for their support of excellence. The intent of the Outstanding County Program Awards is to recognize and share information with other counties about programs that involve a uniquely innovative process, solution or idea to address a county or multi-jurisdictional issue and/or to prevent a future problem from developing.*

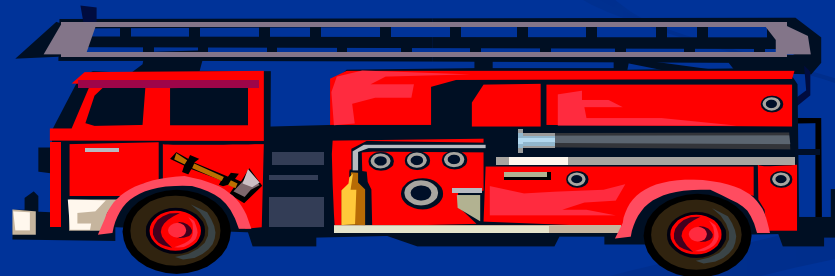
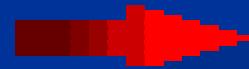
***“Do The RIGHThing”*** has been a program developed by Pasquotank-Camden Emergency Medical Service. For more information on having this program presented for your group or organization, contact us at 252-335-1524.

Copyright © 2003 Pasquotank County





*Do the **RIGHT** Thing*  
for lights and sirens





*Do the **RIGHT** Thing*  
for lights and sirens

